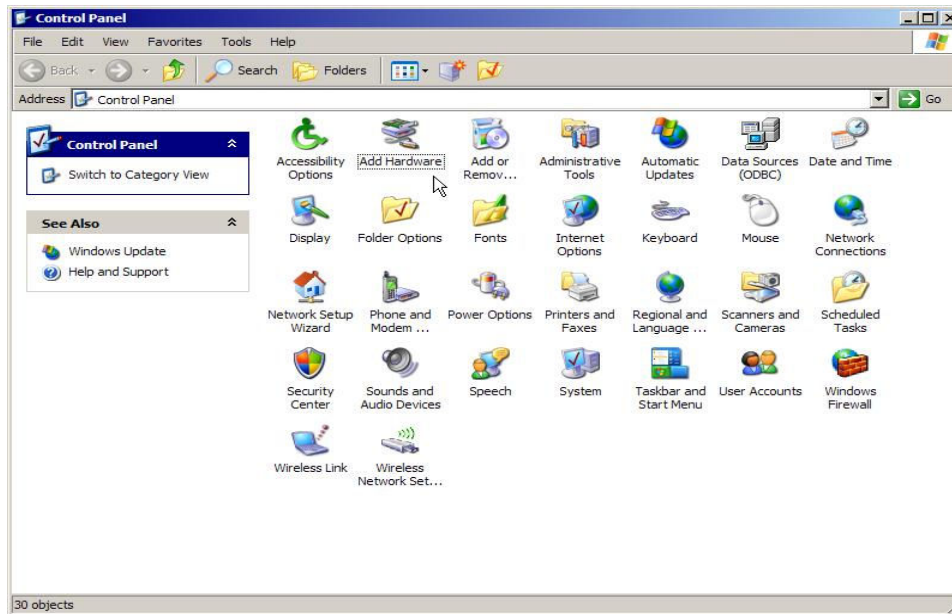
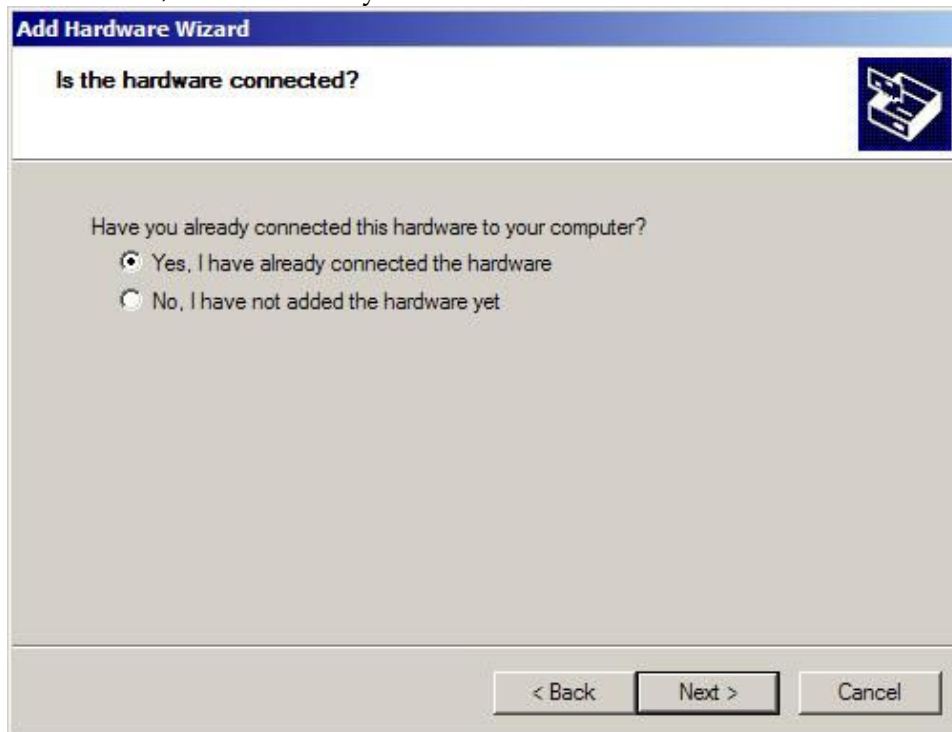


Installing PioneerPOS cash drawer OPOS driver

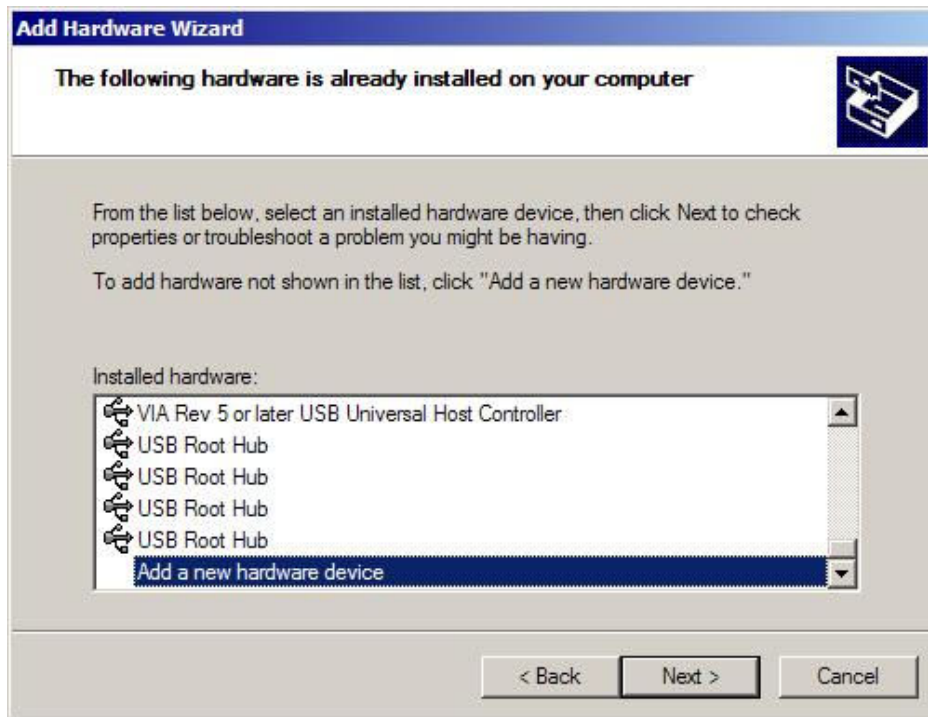
1. Go to Control Panel and click on Add Hardware



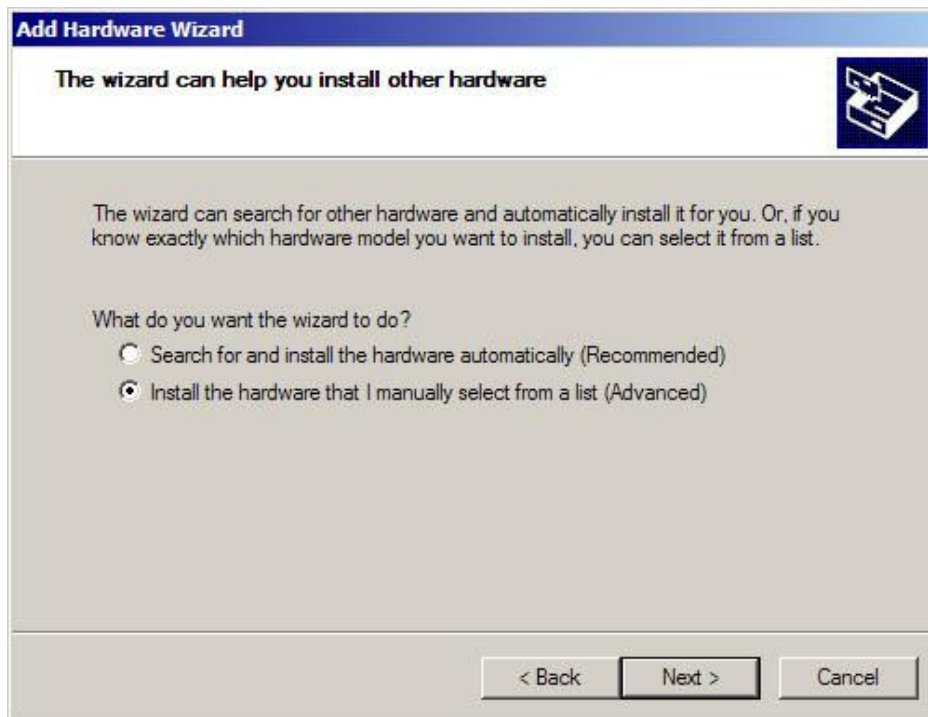
2. Select "Yes, I have already connected the hardware " then click "Next"



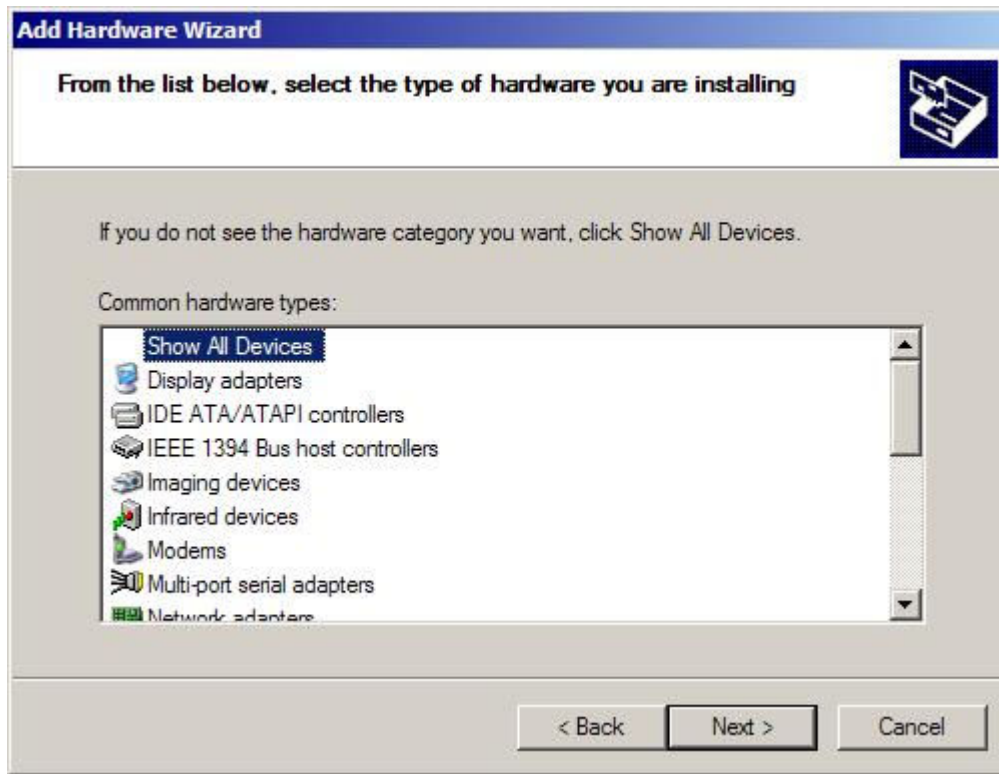
3. Select "Add a new hardware device" then click "Next"



4. Select "Install the hardware that I manually select from a list (Advanced)" then click "Next"



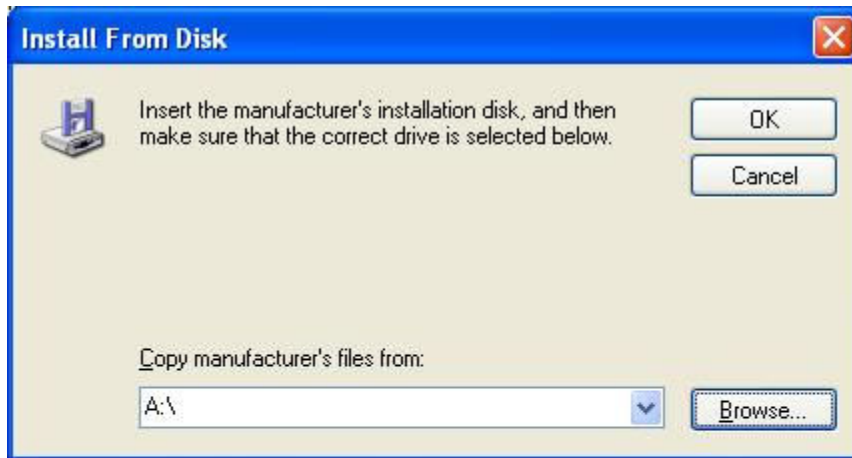
5. Select "Show All Devices" and click on "Next"



6. Click on "Have Disk" and "Next"



7. Next click on "Browse" then browse to the location of the extracted OPOS.zip file and select "pposportio.inf". Click on "Next" to install the driver.



8. Once installed go to "Device Manager", under "Ports (COM & LPT)" you will see "Pioneer POS Port I/O Driver (COM7)".

