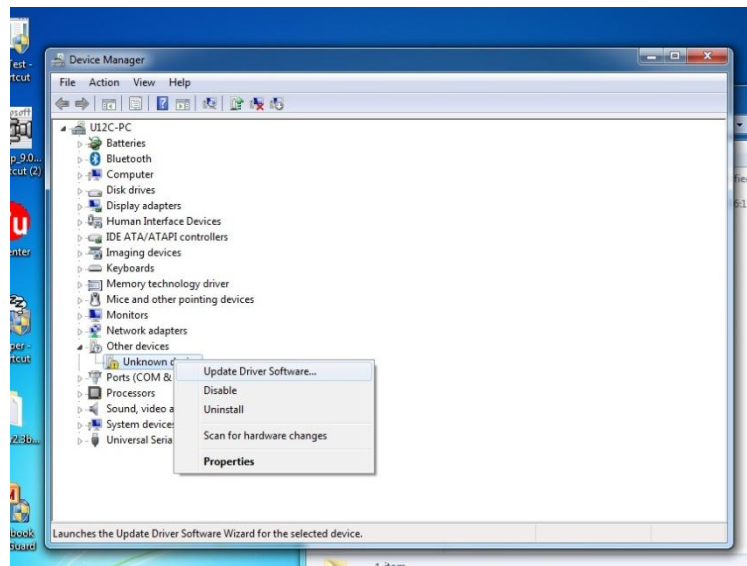
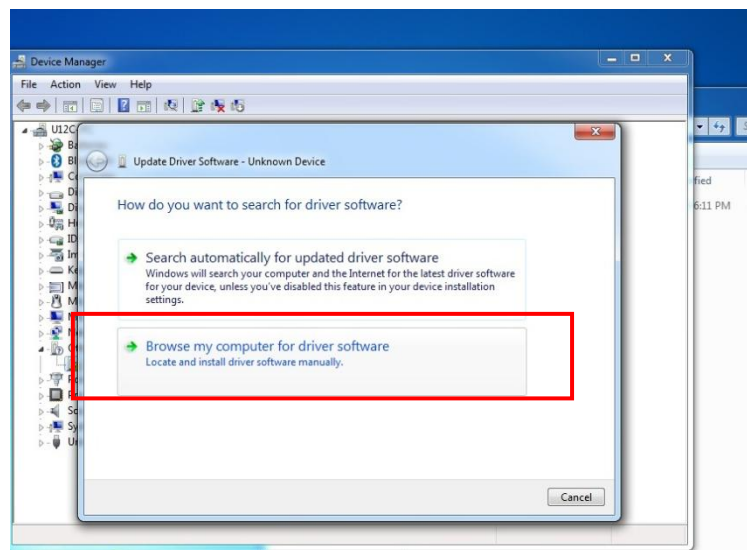


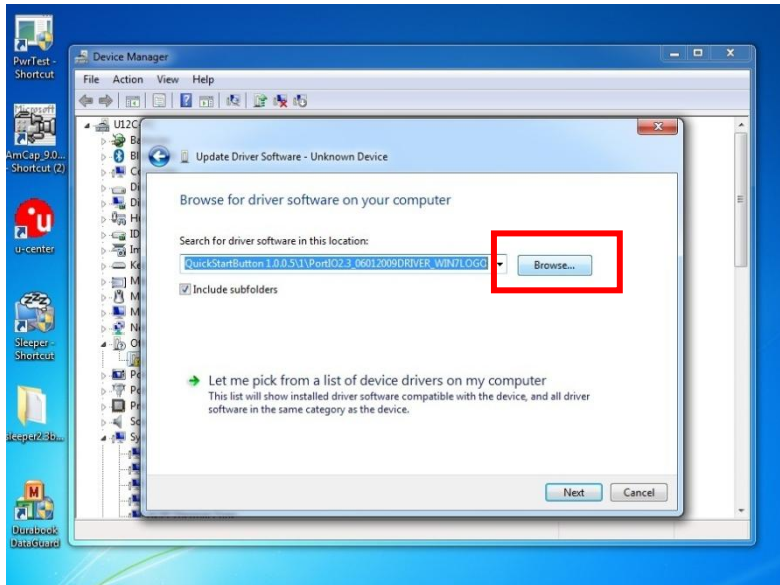
1. 在“Unknown Device”按右鍵，選擇 “Update Driver Software”，如圖所示。



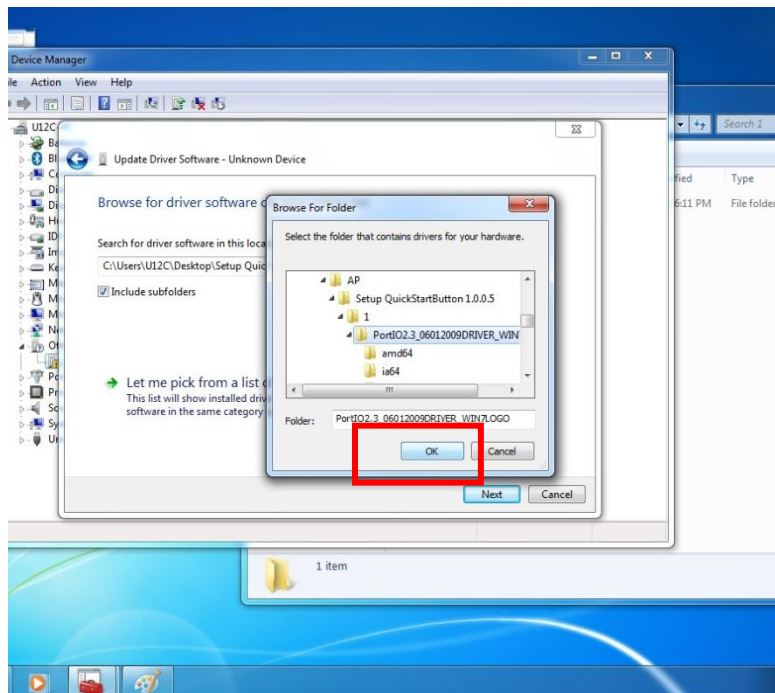
2. 選擇 “Browse my computer for driver software”



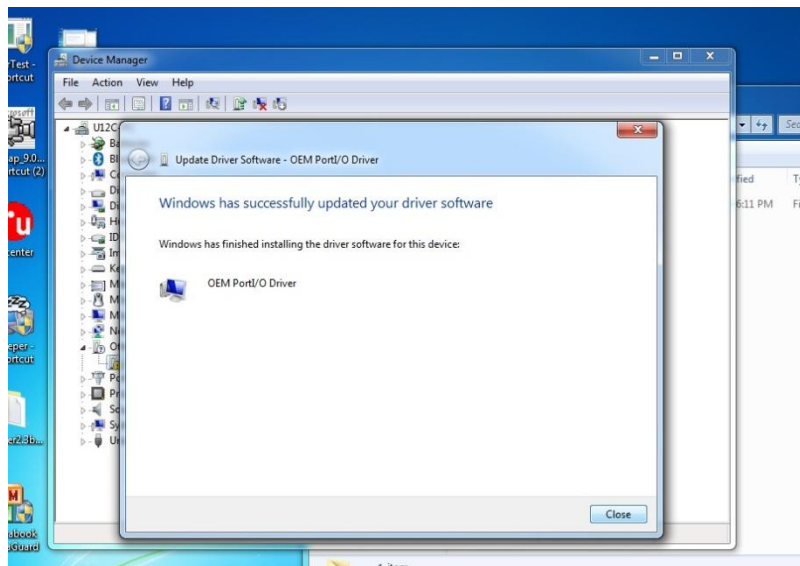
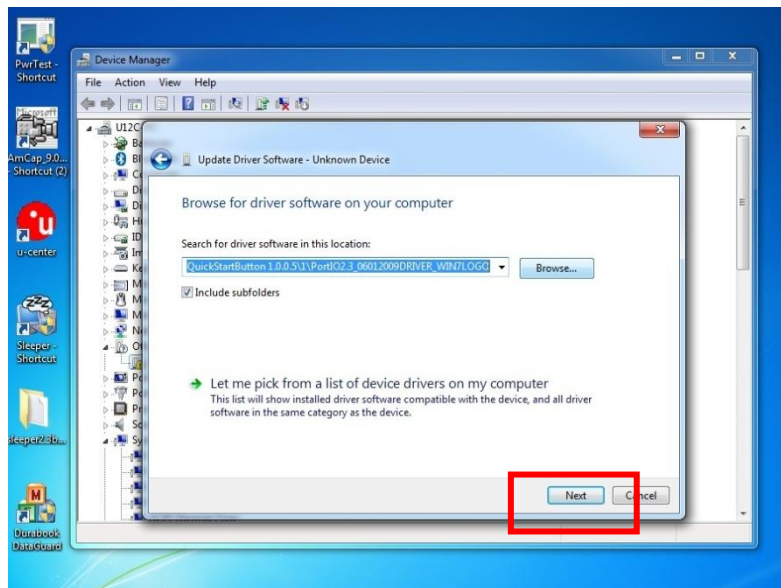
3. 選擇 " Browse "，開啟指定檔案。



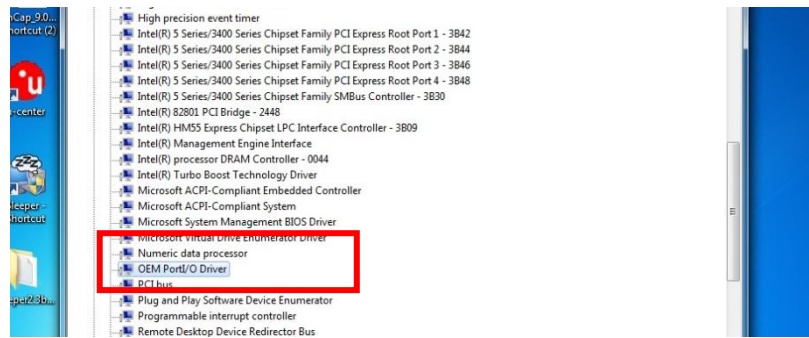
4. 指定解開檔案的路徑 (ex: *\\Setup QuickStartButton 1.0.0.5\\1\\
PortIO2.3_06012009DRIVER_WIN7\\LOGO) 後 按"OK"，如圖所示。



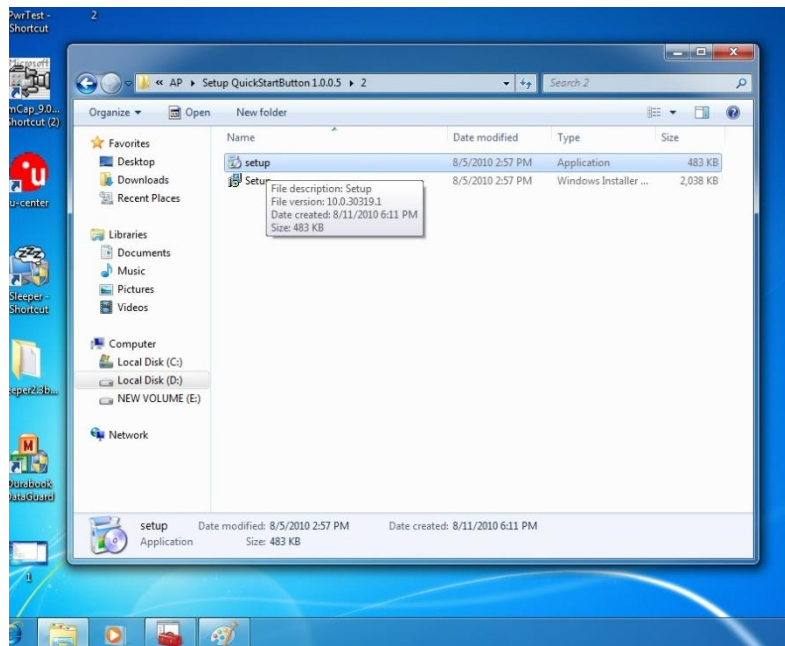
5. 按下“next”後即可正常安裝，安裝完後畫面如下圖所示。



6. 安裝完後會出現下列 Device



7. 在 Setup QuickStartButton 1.0.0.5\2 裡的 "Setup"\, 安裝完後請重新開機



8. 重新開機後，按下 Quick menu button 會出現控制介面如下圖所示

